

University Assistant/Associate Professor

Cambridge Stem Cell Institute

Closing Date: 08 December 2024

Job Reference: RA43502



University Assistant/Associate Professor

Salary:

University Assistant Professor
(£45,585 - £57,696 pa) /
University Associate Professor
(£61,198 - £64,914 pa),
depending on skills and
experience

Contract:

Permanent

Location:

Jeffrey Cheah Biomedical
Centre; Cambridge Biomedical
Campus

Department:

Cambridge Stem Cell Institute

Responsible to:

Prof Bertie Göttgens

Working Pattern:

Full Time

Purpose of the role

The Cambridge Stem Cell Institute is a world-leading centre for stem cell research with a mission to transform human health through a deep understanding of stem and progenitor cell biology (<http://www.stemcells.cam.ac.uk>). We occupy a state of the art building adjacent to Addenbrooke's Hospital and multiple research institutes (<http://cambridge-biomedical.com>). This has nucleated a fully integrated, vibrant and cohesive stem cell community ideally placed to capitalise on the unique intellectual and clinical surrounding environment. The Institute currently has 28 research groups with approximately 300 biological, computational, clinical and physical scientists operating across a wide range of tissues and at multiple scales. CSCI benefits from long-term investment by the Wellcome Trust, most recently via a new Discovery Research Platform for Tissue Scale Biology (<https://www.stemcells.cam.ac.uk/news/launch-discovery-research-platform-tissue-scale-biology>). The Institute also serves as a hub for the wider stem cell community across Cambridge and has more than 30 affiliated researchers across 13 University departments and the neighbouring Babraham and Sanger Institutes.

The Institute has an opening for a University Assistant or Associate Professor who will complement and synergise with our existing programmes. We welcome applications from across the entire range of stem/progenitor cell biology, including research relevant to:

- i. Adult or embryonic/fetal stem cell biology
- ii. Computational Biology
- iii. Cell and Gene therapy
- iv. Organ regeneration and repair

The successful applicant will have a proven track record as an independent Group leader, an outstanding record of independent research and will be expected to direct a rigorous, high quality and externally funded research programme at an international level. Interdisciplinary and collaborative research is strongly encouraged across the University and its associated institutes.

The Institute offers a collegiate environment with excellent core facilities, thus providing extensive opportunities to pursue basic and disease focussed studies. Successful candidates will be supported and mentored to obtain external grant support.



Key responsibilities:**Research Group and Own Lab**

The post holder will establish and run their own lab, leading an independent research programme to carry out research that will complement that of other groups within the Institute in stem cell science.

Research Culture

The Institute fully subscribes to the notion that our success is defined not just by what we achieve, but also how we achieve it. The postholder is expected to adhere to as well as promote our core values of togetherness, fairness, excellence, openness and integrity.

Teaching

The post holder will be expected to contribute to the teaching of the home department.

Recruitment, Training and Supervision

The post holder will recruit, train and supervise members of their own group, which may include postdoctoral researchers, research assistants, technical staff and students. S/he will act as first-line mentor for his/her group members.

Funding

The post holder will be expected to apply for funding to run his/her own lab and assist lab members in making further funding applications where required. The post holder will be responsible for compliance with grant terms and conditions, including open access requirements.

Publishing and dissemination of results

The post holder will be expected to create a strong track record of publishing high impact papers and disseminate the results of his/her work in any ways that seem appropriate and effective (e.g. via conferences and seminars).

Safety and Compliance

The post holder will be responsible for safety within the group, including responsibility for compliance with all the relevant laws (Home Office, HTA etc.)

Institute and University

The post holder will be expected to play an active part in the Institute as a whole, contributing to both its scientific and social life. They will also be expected to contribute to the School and University as a whole, chiefly through the second department within the School of which they are a member.

Person Specification

Criteria	Essential	Desirable
Education		
PhD in a relevant subject and at least 3 years post-doctoral experience.	✓	
Specialist knowledge & skills		
Be well on the way to establishing themselves as internationally recognised experts in their field and have extensive in-depth knowledge of their chosen subject.	✓	
Will have a record of carrying out original/innovative research, actively contributing to the advancement of knowledge in stem cell research at a national and perhaps international level.	✓	
Will have an active and growing bibliography of research publications such as journal contributions, book chapters, etc.	✓	
Interpersonal and Communication skills		
Excellent communication skills at all levels	✓	
Experience of sharing knowledge by giving lectures and seminars to colleagues and/or students and at conferences, and in designing and developing innovative materials for academic purposes.	✓	
Relevant Experience		
Postdoctoral research experience with an emerging high-quality publication track record in academic journals or equivalent.	✓	
Demonstrable engagement in continuous professional development - keeping up-to-date with the latest thinking in stem cell science by reading other research materials, attending conferences and active discussions with other academics in field – both internally at the University of Cambridge and/or with colleagues at other institutions.	✓	
A willingness and ability to attract, train, and develop research students in the area of stem cell science.	✓	

Behavioural Attributes

This section summarises the behavioural attributes (or competencies) that we expect the role holder to be able to demonstrate, at what level and whether this is an essential or desirable requirement.

Full definitions are at: <https://www.hr.admin.cam.ac.uk/policies-procedures/behavioural-attributes>

Please review these and provide specific examples in your application of how you have demonstrated these attributes in your work, education or other experience. It will assist your application if you explain the situation, what you did and what the outcomes were.

Attribute	Level
Valuing Diversity	A
Achieving Results	B/A
Communication	B/A
Innovation and Change	B/A
Negotiating and Influencing	B
People Development	B
Relationship Building	B/A
Strategic Focus	B

Cambridge Stem Cell Institute

The Cambridge Stem Cell Institute (CSCI) was officially established on 1st July 2012. World-leading research scientists, technology specialists and doctors work side-by-side to create one of the world's premiere centres of excellence in stem cell biology and medicine. There are currently 28 mainstream stem cell laboratories led by scientists and clinical-scientists, comprising more than 300 group members, including post-doctoral researchers and PhD students.

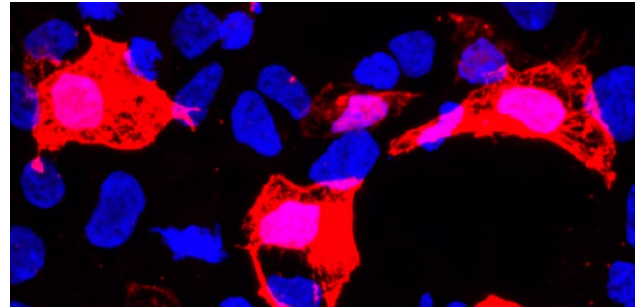
CSCI takes full advantage of the rich intellectual environment in Cambridge by offering affiliate status to collaborating scientists and clinicians in other institutes and departments. The Institute acts as a hub for the wider stem cell community across Cambridge and its neighbouring institutions and currently has 32 affiliated researchers across 13 University departments. CSCI also provides high level training for young researchers from around the world and invites collaborations with bio-industry.

We are:

- **Pioneering:** We use new technologies for innovative research to generate deep insights into stem cell biology and address the biggest challenges facing human health
- **Collaborative:** We bring together biological, clinical and physical stem cell scientists in a fully integrated, vibrant and cohesive Institute
- **Visionary:** We are training the next generation of stem cell scientists to continue and extend our mission into the future.

Research Themes

Stem cells have the extraordinary ability to develop into any type of cell in the body. Stem cells are found in developing embryos



and also in adults in tissues including the brain, bone marrow, skin and liver.

Our research at the Cambridge Stem Cell Institute falls into three broad themes: Stem Cell States, Stem Cells in Disease, Stem Cells & Therapeutics. Many of our scientists contribute to more than one theme, and within these themes we have particular strengths in pluripotency, haematopoiesis, neural and epithelial stem cells.

Location

The CSCI occupies a new state of the art building, the Jeffrey Cheah Biomedical Centre, adjacent to Addenbrooke's and Royal Papworth Hospitals and multiple research institutes on the Cambridge Biomedical Campus.



Professor Bertie Göttgens, Director of the Cambridge Stem Cell Institute

School of Clinical Medicine

Doing great work in a great place to work

About the School

The School of Clinical Medicine currently employs nearly 3,000 people, spanning all varieties of staff type from Academic Professors to administrative support.

In 1976 in response to the recommendation of the Royal Commission on Medical Education in the late 1960's, a complete medical course was re-established in Cambridge with the opening of the School of Clinical Medicine at the new Addenbrooke's Hospital site.

On 21st November 1980, HRH The Duke of Edinburgh, the Chancellor of the University of Cambridge, officially opened the Clinical School Building which presently accommodates the medical library, lecture theatres and seminar rooms.

The University of Cambridge School of Clinical Medicine aspires to change the practice of medicine and improve biological understanding in a wide range of clinical specialties and scientific disciplines. Collaborative research, both within biomedicine and crossing the boundaries to the mathematical, physical and social sciences, is key to our approach. The School also supports key enabling technologies and facilities in imaging, bioinformatics and biological systems. The main areas of research interest are:

- Cancer research
- Cardio-Respiratory Medicine
- Cellular mechanisms of disease
- Diabetes, Endocrinology and Metabolism
- Epidemiology, Public Health and Primary Care
- Genetics and Genetic Medicine
- Haematological and Transplantation Medicine
- Infection and Immunity
- Neurosciences and Mental Health
- Stems Cells and Regenerative Medicine.



Professor Patrick Maxwell, Regius Professor of Physic and Head of the School of Clinical Medicine

The School aims to provide leadership in education, discovery and healthcare. It will achieve this through; inspirational teaching and training, outstanding basic and clinical research and integration of these to improve medical practice for both individual patients and the population.

The School will:

Through inspirational teaching and training, educate individuals who:

- will become exceptional doctors or biomedical scientists
- combine a depth of scientific understanding with outstanding clinical and communication skills demonstrate a caring, compassionate and professional approach to patients and the public and
- are equipped to become future international leaders of their profession.

Through its commitment to the pursuit of excellence, support scientists of international standing in basic and clinical research aiming to:

- understand fundamental biology and thereby the mechanisms underlying disease integrate basic and clinical research
- apply a rigorous mechanism-based approach to clinical problems and
- innovate to solve the health challenges of our society.

The School of the Biological Sciences

The School of the Biological Sciences is one of the six Schools that are responsible for delivering teaching and research and the administration of those activities within the University. The School delivers internationally-leading research and teaching on animal, plant and microbial science at scales that range from the atomic, molecular and cellular through whole organisms to populations and communities. The research impacts on the pharmaceutical and biotechnological industries, on human and animal health and the clinic as well as in conservation, agriculture and the environment.

About the School

The School of the Biological Sciences employs around 2000 staff teaching over 4000 students (around 2000 undergraduates in the Natural Sciences, Medical Sciences and Veterinary Sciences and Psychological and Behavioural Sciences Triposes plus around 2000 postgraduates).

The School collaborates closely with the School of Clinical Medicine. The joint Graduate School of Life Sciences looks strategically at graduate provision and education across the two Schools and at the undergraduate level the Medical Education Committee oversees medical education.

The School is currently arranged in two Faculty Boards (Biology and Veterinary Medicine) which are divided into nine Departments: Biochemistry, Genetics, Pathology, Pharmacology, Physiology, Development and Neuroscience, Plant Sciences, Psychology and Zoology are part of the Faculty Board of Biology while Veterinary Medicine is part of the Faculty Board of Veterinary Medicine.

The School also contains five major interdisciplinary Institutes: Wellcome Trust / CRUK Gurdon Institute for Cancer and Development, Wellcome - MRC Stem Cell Institute, Cambridge Systems Biology Centre, Cambridge Centre for Crop Science and the Sainsbury Laboratory for Plant Development. It has also incorporated the MRC Toxicology Unit, that relocated from Leicester to Cambridge in 2020.

The School is involved with several Strategic Research Initiatives including being a major player in the Cambridge Conservation Initiative. The School is associated with the Museum of Zoology and the Botanic Garden. Key officers of the School plus details of relevant Research Ethics Committee (Human Biology and Psychology) can be found on the School's website.

Athena SWAN The Athena SWAN Charter was launched in June 2005 to recognise and reward commitment to advancing the careers of women working in higher education in science, technology, engineering, mathematics and medicine (STEMM).

The University of Cambridge was a founder member of Athena SWAN Charter and the University won its first award in the inaugural round of March 2006.

Since then, the University has successfully renewed its Bronze Athena SWAN award in 2009 and 2012 and in 2014 achieved a Silver Athena SWAN award.

Many of the Departments in the School of Biological Sciences hold awards at Bronze or Silver level and the School continues to support the Athena SWAN process across all subjects.

Terms of Appointment

Tenure and probation

Appointments are to the retiring age for established academic positions. For University Assistant/Associate Professor the appointment is subject to satisfactory completion of a five year probationary period.

Working Pattern

The appointment is full-time.

Pension

You will automatically be enrolled to become a member of USS (Universities Superannuation Scheme) – a defined benefits pension scheme. If you are already a member of the NHS Pension scheme, you may be eligible to continue in the scheme and should contact the Pensions section of the University: www.pensions.admin.cam.ac.uk/

Annual leave

Subject to compliance with the Statutes and Ordinances relating to leave, full time officers are entitled in any holiday year to take a minimum of 28 days annual paid holiday. These periods are inclusive of public holidays that fall outside Full Term.

Sabbatical leave

Cambridge is generous in having statutory provision for leave of absence of one term for every six terms of service. Academic staff use this opportunity for study and research upon you gaining it.

College membership

Membership of a College adds an important social and many of the University's academic community find attractive. Appointment to a College fellowship is a separate matter from a University appointment. Most colleges expect their fellows to take part in

undergraduate supervision and College administration, for which the College provides modest remuneration additional to University salary. Many academic staff will be invited to join a College as a teaching fellow, but it is not compulsory for academic staff to be a member of a College. The Head of Institution or senior colleagues can offer more advice.

Residence

It is a requirement of the role that you are resident in the University during term-time. Further information can be found here: <https://www.admin.cam.ac.uk/univ/so/2019/chapter11-section1.html#indexterm-d358e257>

General information

Pre-employment checks

Right to work in the UK - we have a legal responsibility to ensure that you have the right to work in the UK before you can start working for us. If you do not have the right to work in the UK already, any offer of employment we make will be conditional upon you gaining it.

Screening Checks

This role requires a standard Disclosure and Barring Service (DBS) Check. Any offer of employment we make to you will be conditional upon the satisfactory completion of this check; whether an outcome is satisfactory will be determined by the University. The nature of this role means that the successful candidate will also need to undergo a health assessment.

Health declaration - once an offer of employment has been made the successful candidate

will be required to complete a work health declaration form.

References - offers of appointment will be subject to the receipt of satisfactory references.

Qualifications - the person specification for this position lists qualifications that are essential and/or desirable. Please note that if you are offered the post you will be asked to provide your relevant original certificates of these qualifications.

Information if you have a disability

The University welcomes applications from individuals with disabilities. We are committed to ensuring fair treatment throughout the recruitment process. We will make adjustments to enable applicants to compete to the best of their ability wherever it is reasonable to do so and, if successful, to assist them during their employment. Information for disabled applicants is available at <http://www.admin.cam.ac.uk/offices/hr/staff/disabled/>

We encourage you to declare any disability that you may have, and any reasonable adjustments that you may require, in the section provided for this purpose in the application form. This will enable us to accommodate your needs throughout the process as required. However, applicants and employees may declare a disability at any time.

If you prefer to discuss any special arrangements connected with a disability, please contact, the Department Administrator, who is responsible for recruitment to this position. Alternatively, you may contact the Clinical School Recruitment Team who are responsible for recruitment to this position via: cshrstaffhub@admin.cam.ac.uk

The University

The University of Cambridge is one of the world's oldest and most successful universities. We are a renowned centre for research, education, and scholarship that makes a significant contribution to society. The University is consistently ranked amongst the top universities in the world. Our affiliates have won more Nobel Prizes than any other University.

Our sustained pursuit of academic excellence is built on a long history of first-class teaching and research within a distinctive collegiate system. For eight centuries our ideas and innovations have shaped the world. Our principal goal is to remain one of the world's leading universities in an increasingly competitive global higher education sector. Today the University of Cambridge is at the centre of a cluster of over 4,300 businesses employing 58,000 people.

Our capital investment projects include the West Cambridge site, the North West Cambridge development and the growth of the Biomedical Campus in the south of the city. The North West Cambridge development includes the opening of a primary school – the first in the UK to be managed by a University. So we are deeply embedded in, and committed to serving, our local community. These are all conspicuous signs of a University that is not only adapting to new needs, but also anticipating the future.

Our mission is to contribute to society through the pursuit of education, learning, and research at the highest international levels of excellence. Our core values are:

- freedom of thought and expression; and
- freedom from discrimination.



About Us

The University is one of the world's leading academic centres. It comprises 150 faculties and departments, together with a central administration and other institutions. Our institutions, museums and collections are a world-class resource for researchers, students and members of the public representing one of the country's highest concentrations of internationally important collections.

The University has an annual income of £2 billion. Research income, won competitively from the UK Research Councils, the European Union (EU), major charities and industry, exceeds £500 million per annum and continues to grow.

The Colleges and the University remain committed to admitting the best students regardless of their background and to investing considerable resources both in widening access and financial support. The 31 Colleges are self-governing, separate legal entities which appoint their own staff. Many academic staff are invited to join a College as a Teaching Fellow, which provides a further social and intellectual dimension. The Colleges admit students, provide student accommodation and deliver small group teaching.

The University awards degrees and its faculties and departments provide lectures and seminars for students and determine the syllabi for teaching and conducting research.

Our instinct for seeking out excellence and setting up enduring and mutually beneficial collaborations has led us to establish strategic partnerships across the globe. Whether it is the successful Cambridge-Africa Programme involving universities in Ghana, Uganda and elsewhere on the African continent; or the close association with the government of India to pursue new research in crop science; or the creation, with Germany's Max Planck Institutes, of a Cambridge-based centre for the study of ethics, human economy and social change – international partnerships are now an inextricable part of the University's make-up.

“Cambridge graduates and researchers have made – and continue to make – a colossal contribution to human knowledge and the understanding of the world around us. Their work touches on the lives and livelihoods of everyone from patients diagnosed with life-threatening diseases, to residents of areas critically affected by climate change, to children growing up in conflict zones. It has a lasting impact on our society, our economy and our culture: the world is truly a better place thanks to their efforts.”

Stephen Toope, Vice Chancellor 2019



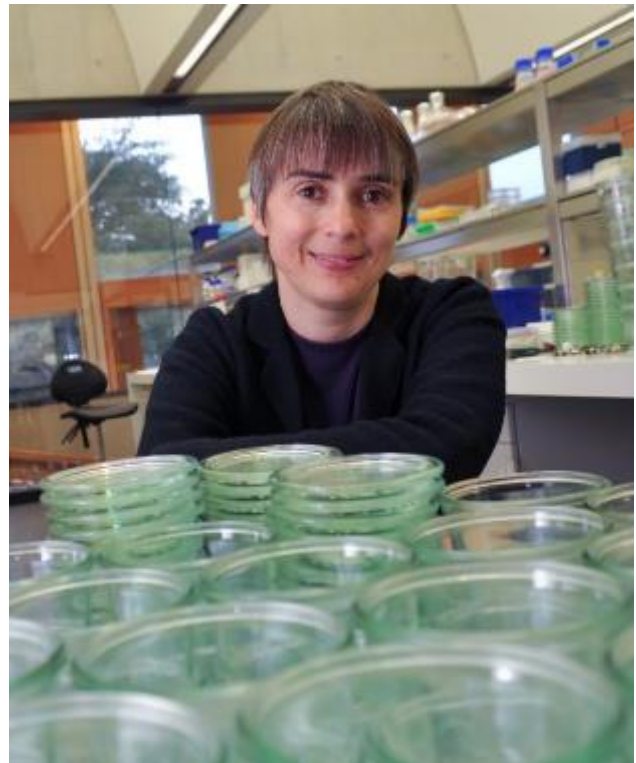
Working at the University

Working at Cambridge you will join a diverse, talented and innovative community, with more than 18,000 students and over 16,000 staff from all walks of life and corners of the world.

The University continually explores strategies to attract and retain the best people. It is committed to supporting its staff to achieve their best. We are a fair, diverse and inclusive society and we believe our staff are our greatest asset. There is strong commitment to developing institutional leadership and supporting and encouraging staff development at all levels.

We offer a variety of roles including academic, research, professional, managerial and support roles. We also offer extensive benefits and excellent learning opportunities within a stimulating working environment.

The University's estate is undergoing the most significant transformation in its history. Cambridge has been able to create a new science and technology campus to the west of the city centre, and is now expanding further to the north west of Cambridge including investing in affordable homes for University key workers and community facilities. Even with our continued development, the University remains within walking or cycling distance across the campus. The University is a major partner on the Cambridge Biomedical Campus and we continue to redevelop our historic city centre sites demonstrating our determination to ensure that we can offer the best facilities and opportunities for our staff and students.



Equality & diversity

The University has built its excellence on the diversity of its staff and student community. We aim to be a leader in fostering equality and inclusion, and in promoting respect and a sense of belonging for all. We encourage applications from all sections of society. All appointments are made on the basis of merit. We have an Equal Opportunities Policy, along with a range of diversity networks for women, black and minority ethnic and lesbian, gay, bisexual and transgender staff. More details are available here: <http://www.equality.admin.cam.ac.uk/>

The University has a bronze Race Equality Charter aware, with framework for improving the representation, progression and success of minority ethnic staff and students within higher education. Furthermore, the University's Athena SWAN award recognises and celebrates good practice in recruiting, retaining and promoting women.

Living in Cambridge

Cambridge is rich in cultural diversity. From beautiful University and College buildings, museums and art galleries, quaint gardens and punts on the River Cam, to a vibrant restaurant and café scene, our employees are surrounded by the wonderful features of this unique city.

You can find a wide-range of high street shops and 3 shopping centres, with independent alternatives at the historic market and nestled within the passageways in the city centre. You will find a cinema, bowling alley, a nightclub and various live performances At the Cambridge Leisure Park, with further entertainment options at the Corn Exchange, Arts Theatre and the ADC Theatre. Further information can be found on the [Visit Cambridge](#) website.

If you prefer the faster pace of life, London is a 45 minute train journey away. For those travelling from overseas, Stansted Airport is just 45 minutes away and Heathrow Airport under 2 hours away. The University is a short distance from a host of other attractions such as Ely Cathedral, Newmarket Races and various wildlife parks and stately homes. Cambridge is also within easy reach of the beautiful Broads and coastlines of Norfolk and Suffolk.

Relocation Support

The University recognises the importance of helping individuals to move and settle into a new area. We provide support and guidance to those relocating internationally or domestically to take up a post at the University of Cambridge, liaising with other University offices and selected partners to ensure comprehensive relocation support is available. This includes: accommodation, childcare, schools, banking, immigration and transport. If you would like further information, please visit <https://www.accommodation.cam.ac.uk/>. The Shared Equity Scheme and the Reimbursement of Relocation Expenses Scheme provide financial assistance to qualifying new members of staff with the costs of relocating to Cambridge.

Accommodation Service

The University Accommodation Service helps staff, students and visiting scholars who are affiliated to the University in their search for suitable accommodation in Cambridge. The dedicated accommodation team can provide access to a wide range of University-owned furnished and unfurnished properties, and has a database of private sector accommodation available for short and long-term lets. For further information and to register with this free service please visit <https://www.accommodation.cam.ac.uk/>



What Cambridge can offer

We offer a comprehensive reward package to attract, motivate and retain high performing staff at all levels and in all areas of work.

The University offers a wide range of competitive benefits, from family leave entitlement, to shopping and travel discount schemes. Our generous annual leave package contributes to the positive wellbeing of our University employees. Sabbatical leave enables academics to focus on research and scholarship, whilst still maintaining their full salary. The University also has a [career break scheme for academic and academic-related staff](#), with additional flexible working policies for all other staff.

Pay and benefits

The University salary structure includes automatic service-related pay progression in many of its grades and an annual cost of living increase. In addition to this, employees are rewarded for outstanding contribution through a number of regular pay progression schemes. The University offers attractive pensions schemes for employees, with an additional benefit of a salary exchange arrangement providing tax and national insurance savings. Payroll giving is also a simple, tax-efficient way for employees to make monthly donations to charity.



CAMbens employee benefits

We offer a CAMbens scheme for University employees, providing access to online and in-store shopping discounts and cashback. With more than 2,000 participating retailers, employees can save money on a wide range of household expenses, from groceries and clothes, to holidays and insurance and much more. A range of local discounts are also available, helping employees to save money whilst also supporting local Cambridge businesses and a CAMbens Cycle to Work salary sacrifice scheme is also available, which enables employees to save money on transport costs. A 10% discount rate on the [purchase of train season tickets, bulk buy tickets](#) and an interest free travel to work loan are also available for staff of the University.



What Cambridge can offer

Family-friendly policies

The University recognises the importance of supporting its staff. We have a range of family-friendly policies to aid employees' work-life balance including a generous maternity, adoption and shared parental leave entitlement of 18 weeks full pay and emergency family care support via My Family Care.

Other family-friendly support includes:

Our highly regarded workplace nurseries, a childcare salary exchange scheme and a high quality holiday Playscheme may be available to help support University employees with caring responsibilities (subject to demand and qualifying criteria). Further childcare information can be found here:

<https://www.childcare.admin.cam.ac.uk/>

The Newcomers and Visiting Scholars Group is an organisation within the University run by volunteers whose aim is to help newly arrived wives, husbands, partners and families of Visiting Scholars and members of the University to settle in Cambridge and give them an opportunity to meet local people. The Office of Postdoctoral Affairs supports the postdoctoral community within Cambridge. Further details are available here: <https://www.opda.cam.ac.uk/>

Your wellbeing

The University's Sport Centre, Counselling Services and Occupational Health are just some of the support services available to University employees to promote their physical and mental wellbeing. There are many societies in Cambridge catering for almost every taste and interest. Whether you want to take part in a sport, participate in music or drama, pursue a hobby, or join a political group, you will almost certainly find that a society exists for this purpose. The University also hosts the [Cambridge Science Festival](#) and [Cambridge Festival of Ideas](#), as well as [Open Cambridge](#) weekend, which together attract over 50,000 visitors per year. The festivals are a great opportunity to get your first taste of public engagement, through volunteering, supporting hands-on activities or proposing a talk.

Development opportunities

We support new employees to settle in through various activities. The encouragement of career development for all staff is one of the University's values and we put this into practice through various services and initiatives. Our Personal and Professional Development Department provides development opportunities and courses for all University employees. These include face-to-face sessions, online learning modules and webinars. Employees may also apply for financial support to undertake training that will lead to a qualification. We offer reduced staff fees for University of Cambridge graduate courses and the opportunity to attend lectures and seminars held by University departments and institutions. Apprenticeship programmes are also available to support employees to develop their skills, experience and qualifications.



Clinical School Benefits

Cambridge Biomedical Campus

Being based on Cambridge Biomedical Campus gives the University of Cambridge School of Clinical Medicine employees an unrivalled range of on-site amenities.

These include:

Core amenities

- Marks & Spencer Simply Food
- Clothes & Gift shops
- The Body Shop
- Newsagent
- Barclays Bank
- Hairdressers
- Costa Coffee/Starbucks
- Various food outlets

Sports and Leisure

The Frank Lee Sports and Leisure Centre on the Campus is open to everyone who works on the Campus including employees of companies. The Centre offers a comprehensive range of activities for both adults and children (during the school holidays). Facilities include a 25m heated indoor pool, tennis and squash courts, cardio gym and fitness rooms. There is also a licensed bar, restaurant and function rooms.

Childcare

Bright Horizons Long Road nursery is located on the Campus making it an ideal location for parents who work at the site. The nursery is purpose built and houses five home bases, each designed specifically for babies, toddlers and pre-school children, as well as a spacious and secure external area in which children can play and explore the outdoors.

Apprenticeship opportunities

These are available for new and current members of staff to earn while they learn. The University is committed to nurturing talent and developing expertise through providing relevant vocational and professional apprenticeships across all of its departments and institutions.



Clinical School Wellbeing Programme

Following the launch of the Clinical School Wellbeing Programme in April 2014 it has continued to develop and grow each year. The School holds regular wellbeing talks and events in addition to hosting two dedicated Wellbeing Weeks packed with activities for staff each year. Activities include staff massages, smoothie bikes, step challenges, arts and crafts sessions and many more.

The School also has a team of Mental Health First Aiders recruited and trained from our own pool of staff. The School is always looking for new ways to engage staff and encourage them to look after their physical and mental wellbeing.



Equality, Diversity and Inclusion

The School of Clinical Medicine has a dedicated governance group overseeing equality, diversity and inclusion related activities. Regular talks are held throughout the year and all staff members are expected to undertake Equality and Diversity training.

The School has a number of networks for different staff groups encouraging communication and sharing of practices. There is also a growing network of 100+ Equality Champions who meet termly and help raise awareness of equality, diversity and inclusion within their departments. The School currently holds a silver Athena SWAN award utilising the process to critically analyse all areas of equality and diversity within the school.

How to apply

Applications should be submitted online via the University of Cambridge jobs page www.jobs.cam.ac.uk by clicking “Apply online” in the job advert. You will need an email address to register for our online system.

Applicants should upload a cover letter, curriculum vitae (max 3 pages) with contact details of 3 referees, and a 3-page outline of your research proposal, by **08 December 2024**.

Conversations about flexible working are encouraged at the University of Cambridge. Please feel free to discuss flexibility prior to applying (using the contact information below) or at interview if your application is successful.

Informal enquiries are welcomed and should be directed to:
Anthea Stanley; ajs33@cam.ac.uk.

If you have any queries regarding the application process please contact hr@stemcells.cam.ac.uk.

The closing date for applications is Sunday 2024. Interviews will be held over a two-day period in January 2025.